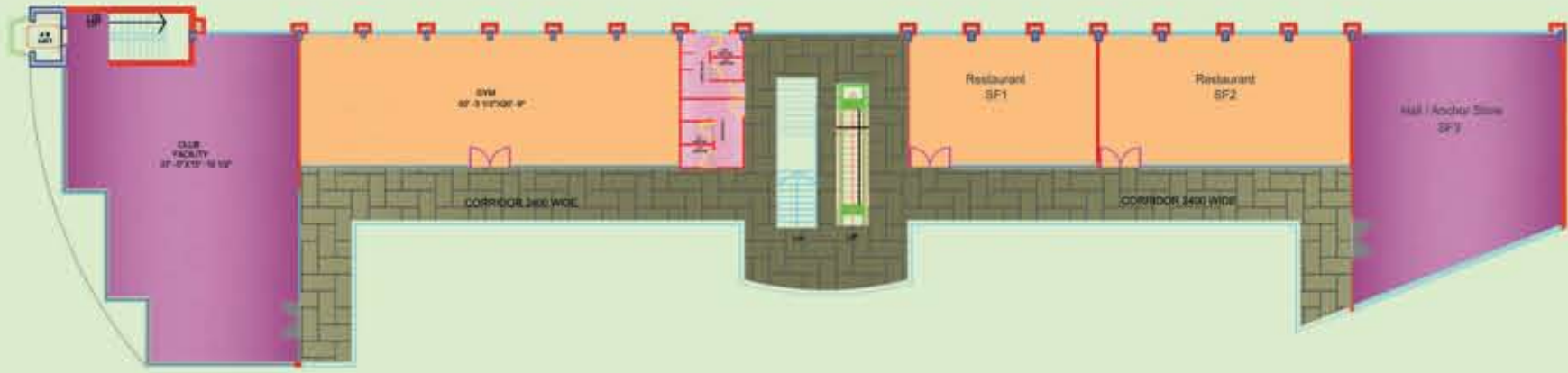




Corporate Office :
 5, 3rd Floor, City Mart, Sohna Road, Gurgaon
 Phone : + 91 124 4988988 (100 Lines)
 Fax : + 91 124 4143443
 Mobile : 9818356111 - 333 - 555, 9560846111 - 222 - 333
 E-mail : info@avalongroup.in, sales@avalongroup.in
 Visit us at : www.avalongroup.in

avalon
Plaza
 SHOPPING COMPLEX



Second Floor Plan

| Shop No. First Floor | Shop Size (Width x Length) (ft.) | Covered Area (sq. ft.) |
|----------------------|----------------------------------|------------------------|
| S-1 | 30'-0" x 21'-6" | 645.00 |
| S-2 | 40'-0" x 21'-6" | 860.00 |
| S-3 | 33'-0" x 37'-3" | 1255.36 |

SECOND FLOOR PLAN



The Project

Avalon Plaza, the shopping complex is part of Avalon Gardens, Bhiwadi having a huge frontage on Alwar Bye Pass road with landscaped green area and water bodies.

This Shopping Complex will cater to the shopping requirements of the huge population of adjoining residential complexes. This will be one of the finest shopping & leisure destinations of Bhiwadi.

Avalon Gardens having approx. 500 Apartments is sold out with many corporate clients like : Honda Car, Hero Honda, Gillette India, Amtek Auto, Lafarge Cement, EDS, HCL, Shree Cement, TCS, TVS Tyres, Suzuki, LS Cables, Cosco, Blue Star, Bank of America, Ranbaxy etc. and also many buyers from ARMY & DEFENCE services. The construction is in full swing at the existing site. The project is approved by Axis Bank, LIC Housing, GIC Housing & PNB Housing for home loans.

Salient Features

- + Glass Elevation
- + Landscaping with cascading fountains in front.
- + All shops are Front Facing
- + Escalators
- + Huge Parking Areas
- + Low maintenance as compared to mall
- + Suitable for Banks, ATM's, Doctors, Food Court & Multi Cuisine Restaurants, Shops, Lawyers, Offices etc.

The Group

The core team of Avalon Group comprises of a highly qualified professional management group, which has acted as the driving force to take Avalon Group to new heights of success and expertise. The group has a experience of more than 20 years in construction & real estate.

Avalon Group have an edge over others, by delivering on their promises. For Avalon Group the number of projects completed in not the main consideration but what matters is their efficient management.

Being sole distributors for Proctor & Gamble and Gillette for Punjab, the marketing wing has a dedicated workforce of over 700 employees with branches in all major towns of Punjab.

Bhiwadi

Bhiwadi, the gateway of Rajasthan is an industrial town with corporates like: HONDA SIEL, SAINT GOBAIN, ORIENT CRAFT, MAHINDRA & MAHINDRA, GILLETTE, JAQUAR, KAJARIA CERAMICS, PEPSI etc. Since last few years it is becoming a hub for real estate. It's real estate development led to it being featured as one of the hottest investment destinations.

Alwar District has got the second highest proposed investment in the state of Rajasthan, after Jaipur totalling more than 36,000 Cr and major portion of this is for Bhiwadi.

SEZ's of Reliance Group & DLF Group apparel processing Export Zone, Leather Processing Zone have been approved in the near vicinity.



Construction Linked Payment Plan-I

| | | |
|----------------------------------|---|--------------------|
| At the time of Booking | : | 20% |
| Within 45 days of Booking | : | 10% |
| On Start of Foundation | : | 10% |
| On Start of Ground Floor | : | 15% |
| On Start of 1st Floor | : | 15% |
| On Start of 2nd Floor | : | 15% |
| On Start of Flooring / Finishing | : | 10% |
| On Possession | : | 5% + Other Charges |

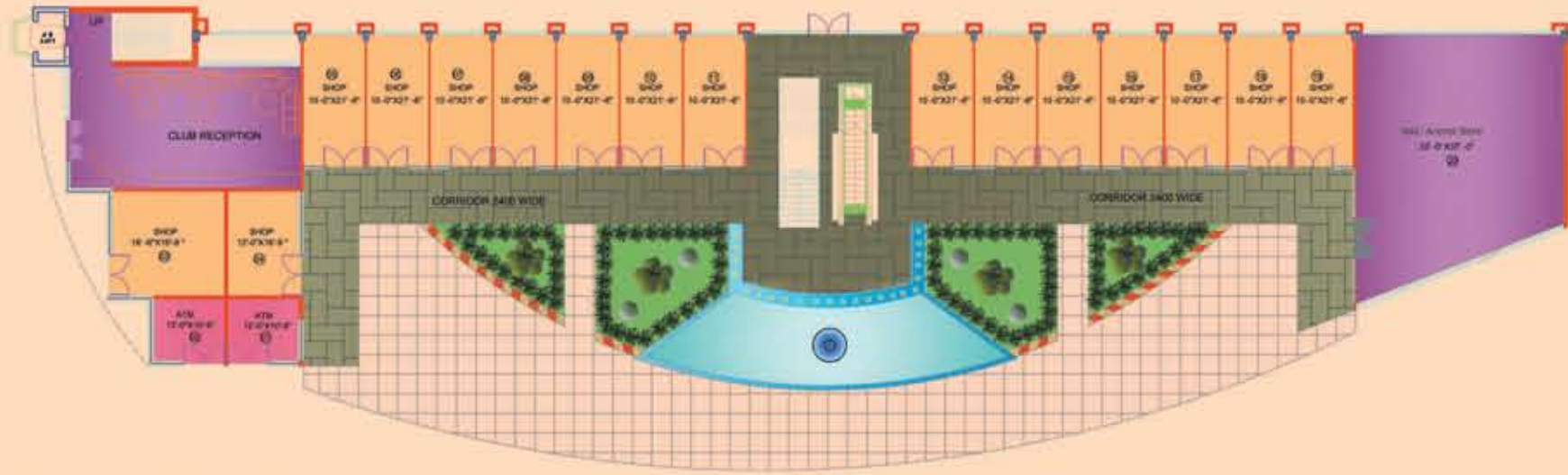
Down Payment Plan-II

| | | |
|----------------------------|---|--------------------|
| Booking Amount | : | 20% |
| Within 1 Month | : | 75% |
| On Possession | : | 5% + Other Charges |
| Less Down Payment Discount | : | (8% on cost)* |

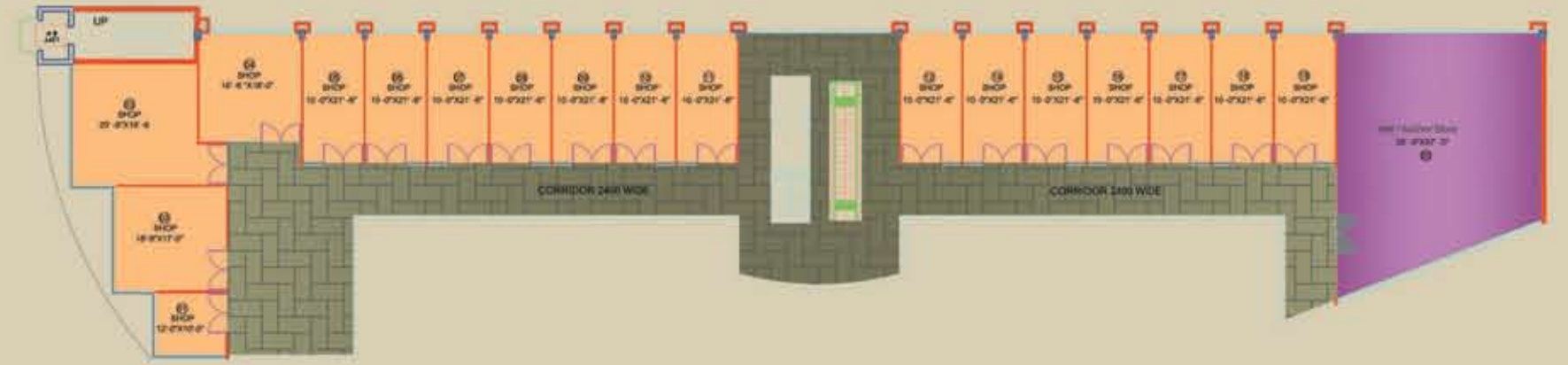
Subject to change from time to time at the sole discretion of the company.

Terms & Conditions :

- + All payments should be made by cheque / draft / payorder in favour of "Avalon Projects" payable at Delhi/New Delhi.
- + All prices are calculated on covered area basis.



Ground Floor Plan



First Floor Plan

| Shop No. Ground Floor | Shop Size (Width x Length) (ft.) | Covered Area (sq. ft.) |
|-----------------------|----------------------------------|------------------------|
| G-1 | 12'-0" x 10'-9" | 120.00 |
| G-2 | 12'-0" x 10'-9" | 120.00 |
| G-3 | 18'-6" x 16'-9" | 309.88 |
| G-4 | 12'-0" x 10'-9" | 201.00 |
| G-5 | 10'-0" x 21'-6" | 215.00 |
| G-6 | 10'-0" x 21'-6" | 215.00 |
| G-7 | 10'-0" x 21'-6" | 215.00 |
| G-8 | 10'-0" x 21'-6" | 215.00 |
| G-9 | 10'-0" x 21'-6" | 215.00 |
| G-10 | 10'-0" x 21'-6" | 215.00 |
| G-11 | 10'-0" x 21'-6" | 215.00 |
| G-12 | 10'-0" x 21'-6" | 215.00 |
| G-14 | 10'-0" x 21'-6" | 215.00 |
| G-15 | 10'-0" x 21'-6" | 215.00 |
| G-16 | 10'-0" x 21'-6" | 215.00 |
| G-17 | 10'-0" x 21'-6" | 215.00 |
| G-18 | 10'-0" x 21'-6" | 215.00 |
| G-19 | 10'-0" x 21'-6" | 215.00 |
| G-20 | 33'-0" x 37'-3" | 1255.36 |

GROUND FLOOR PLAN



| Shop No. First Floor | Shop Size (Width x Length) (ft.) | Covered Area (sq. ft.) |
|----------------------|----------------------------------|------------------------|
| F-1 | 12'-0" x 10'-0" | 120.00 |
| F-2 | 18'-9" x 17'-0" | 318.75 |
| F-3 | 20'-9" x 19'-6" | 404.63 |
| F-4 | 16'-0" x 18'-0" | 297.00 |
| F-5 | 10'-0" x 21'-6" | 215.00 |
| F-6 | 10'-0" x 21'-6" | 215.00 |
| F-7 | 10'-0" x 21'-6" | 215.00 |
| F-8 | 10'-0" x 21'-6" | 215.00 |
| F-9 | 10'-0" x 21'-6" | 215.00 |
| F-10 | 10'-0" x 21'-6" | 215.00 |
| F-11 | 10'-0" x 21'-6" | 215.00 |
| F-12 | 10'-0" x 21'-6" | 215.00 |
| F-14 | 10'-0" x 21'-6" | 215.00 |
| F-15 | 10'-0" x 21'-6" | 215.00 |
| F-16 | 10'-0" x 21'-6" | 215.00 |
| F-17 | 10'-0" x 21'-6" | 215.00 |
| F-18 | 10'-0" x 21'-6" | 215.00 |
| F-19 | 10'-0" x 21'-6" | 215.00 |
| F-20 | 33'-0" x 37'-3" | 1255.36 |

FIRST FLOOR PLAN

